

Ares/ Urano Manual Override Instructions

Thank you for buying this product, our company is sure that you will be more than satisfied with the product's performance. The product is supplied with a "Instruction booklet". This should be read carefully as it provides important information about safety, installation, operation and maintenance. This product complies with the recognised technical standards and safety regulations.

SAFETY

If correctly installed and used, this automation device satisfies the required safety level standards. However, it is advisable to observe some practical rules in order to avoid accidental problems. Before using the automation device, carefully read the operation instructions and keep them for future reference.

- Keep children, persons and things outside the automation working area, particularly during operation.
- Keep radio control or other control devices out of children's reach, in order to avoid any unintentional automation activation.
- Do not intentionally oppose the leaf movement.
- Do not attempt to open the gate by hand, if the actuator has not been released by means of the appropriate release knob.
- Do not modify the automation components.
- In case of malfunction, disconnect the power supply, activate the emergency release to gain access to the actuator and request the assistance of a qualified technician (installer).
- Before proceeding to any external cleaning operation, disconnect the mains powers supply and at least one of the battery pole, if fitted.
- Keep the photocell optical components and luminous signal indication devices clean. Check that the safety devices (photocells) are not obscured by branches or shrubs.
- For any direct assistance to the automation system, request the assistance of a qualified technician (installer).
- Have qualified personnel check the automation system once a year.

MANUAL RELEASE

The manual or emergency release is to be activated when a gate must be opened by hand, and in all cases where the automation system fails to operate or operates incorrectly.

To carry out the emergency manoeuvre, proceed as follows:

- Insert the personalised key into the lock, rotate the key anticlockwise by 90° (old version fig 1) 180°(new version fig A)
- **Old version:** hold the release knob and rotate it clockwise (fig. 2) until it stops.
- **New version:** open latch door until it stops. (fig B)

This way the pinion is made to idle, and therefore allows the gate to be opened by hand.

- Push the gate leaf by hand, helping it along its entire stroke. The key cannot be taken out of the lock until the knob / latch is brought back to its initial position (motor-driven activation).

Warning: Do not push the gate leaf hard, but rather help it along its entire stroke.

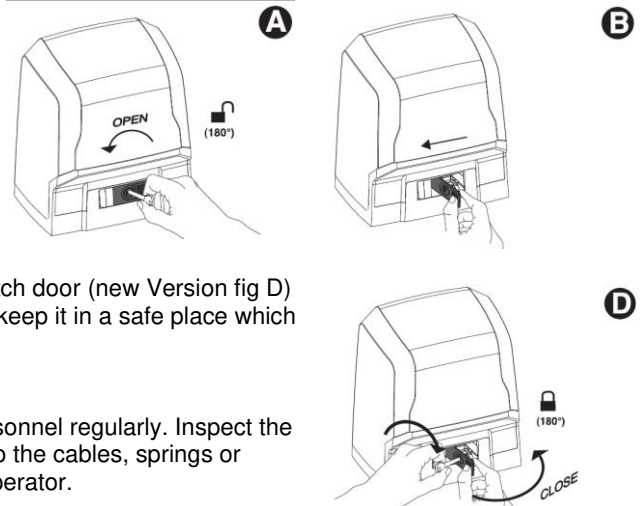
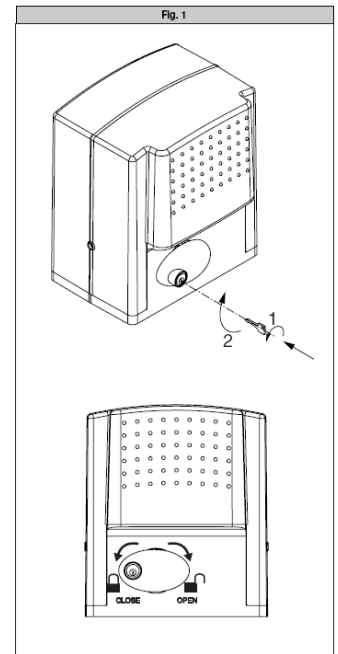
- To reset motor-driven control, ensure gates are stationary and in the open position.

Warning damage may occur if gates are not stationary.

- Rotate the knob anticlockwise along its entire stroke (old version) close latch door (new Version fig D) fully & move the key back to its locking position; then take the key out and keep it in a safe place which is known to all the people concerned.

MAINTENANCE

The maintenance of the system should only be carried out by qualified personnel regularly. Inspect the installation frequently to check that there are no signs of wear or damage to the cables, springs or supports. If any maintenance work is deemed necessary, do not use the operator.



Please note

Override key supplied are individual to each motor, we recommend that you get another one cut as a spare.

For OH&S purposes we recommend that you prepare a procedure to notify everyone on how to manually override the gate and where the key will be kept.